



# VISITOR INFO



children's  
museum

# THE GALLERIES

Built in 1889, the Children's Museum is housed in the oldest surviving train repair facility in Western Canada and is home to twelve exciting permanent galleries. Unlike the no-touch exhibits at other more traditional museums, our galleries are always ready for hands-on fun! The latest innovations in education and exhibit design come together in creative environments at the Children's Museum to provide a powerful learning experience that entertains as it educates.



## 1. TIME SQUARED

Every town needs a central meeting place to share exciting stories, to rest up before the next big adventure, or to plan out another series of explorations! Synchronize your watches at the Square Clock Tower and let's get going!

## 2. TOT SPOT

Getting there is all the fun — especially if you're the littlest museum visitor. Tots ride, walk, or crawl their way over bridges and through a tunnel, so park your stroller at the Stroller Park and explore this miniature version of the Children's Museum!

## 3. TUMBLE ZONE

Is this a builder's fantasy, an ambitious urban planning project, or a game? Inside are all the things you need to create your own unique cityscape using strange and unusual pieces that replace traditional building blocks.

## 4. MELLOW MARSH

Bug-sized visitors walk under the giant leaves to admire the flowers in this "organic" cube. But these flowers are for more than looking at. The pin screen and art machine flowers are for touching and leaving your mark!

## 5. STORY LINE

"Are we there yet?" won't be heard as visitors ride the train on the literacy-based Story Line. Six destinations transport visitors anywhere imaginable — from outer space to deep beneath the sea, Story Line explores it all!

## 6. ENGINE HOUSE

Gears and levers, pipes and pulleys — these are the parts that help make a real train run. At the Engine House you get to see the insides of an actual train engine and conduct a little locomotive action of your own!

## 7. JUNCTION 9161

Junction 9161 is all about the train — the powerful locomotive that forms the spine of the museum experience! Standing inside or out, you can explore the enormity of this great machine.

## 8. ILLUSION TUNNEL

What's real? What's not? How is what you see different from what really is? Can the train rumble down the line into the tunnel? Using forced perspective, you're drawn into this giant slide to test your perceptions.

## 9. MILK MACHINE

Can you see what a cow sees? Can you hear what a cow hears? Of course you can, if you're at the Cow Controls in the Milk Machine! When you enter this GIANT cow cube, you're going to have a "dairy" good time.

## 10. SPLASH LAB

Grab a lab-coat-slicker and join in the fun! Whether you're playing by the enormous bubble wall, having a blast at the water table, or finishing it all off with an experiment, watch out — there's water everywhere!

## 11. POP M'ART

This is no ordinary grocery store, nor is it an art exhibit. So what is it? It's Pop m'Art — where kids "shop" for recycled supplies and create works of art! The stock is always changing, the creations transforming — this space IS art, but on the largest scale.

## 12. LASAGNA LOOKOUT

Ever play with your food? Well this food plays with you! Lasagna you can climb through and take a different path each time, always ending up on top at the Lasagna Lookout. Check out the Rigatoni Roller and Spaghetti Forest, or take a break on the Ravioli Pillows!

# EXTRAS!

## SCHOOL PROGRAMS

From September to June, we offer a variety of school programs for Nursery to Grade 5 classes. Students discover the world around them through interactive activities and gallery explorations. Book online or call 204.924.4005 for more information.

## BIRTHDAY PARTIES & FACILITY RENTALS

The Children's Museum is a unique venue available both during and after hours for birthday parties, meetings, and other special events. Book online or call 204.924.4004 for more information.

## EATON'S FAIRYTALE VIGNETTES

Open seasonally, this much-loved Winnipeg display originally housed in the Eaton's downtown store found a home at the Children's Museum. During November and December, take a stroll through the display and perhaps meet Santa himself at any of our special holiday events!

## SPECIAL TRAVELLING EXHIBITIONS

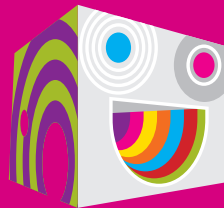
Explore new and exciting travelling exhibitions made especially for kids. Travelling exhibitions are only around for a limited amount of time, so be sure to see them before they're gone! Visit [childrensmuseum.com](http://childrensmuseum.com) for information on any special travelling exhibitions that may be open during your next visit.

## DAY CAMPS

The Children's Museum offers fun-filled day camps that get kids' minds and bodies moving during spring and summer breaks. With indoor and outdoor activities, games, crafts, time in the galleries, special guests, and field trips, children are sure to have a memorable week full of adventure at our day camps! Register online or call 204.924.4014 to learn more.

## SHOP

Our award-winning gift store is filled with innovative products for children. Shop is a great place to pick up a souvenir of your museum experience, to grab snacks for your visit, to find that special gift, or even to purchase goodie bags for birthdays or special events. And best of all, purchases made at Shop support the Children's Museum!



# HOURS & RATES

For current hours and rates,  
call our info line at 204.924.4000  
or visit [childrensmuseum.com](http://childrensmuseum.com).

## ANNUAL CLOSURES

4-Day Closure Week in September

December 24 & 25

## FOR YOUR INFORMATION

1. The Children's Museum reserves the right to restrict admitting children unaccompanied by adults as well as adults unaccompanied by children.
2. Services are available in English and French. Ask about the availability of services in other languages.
3. Children are required to wear appropriate indoor footwear in the museum's galleries.
4. As a courtesy to visitors with life-threatening allergies, please do not bring products containing nuts into the museum.
5. Helium balloons are not permitted in the museum and will be held at Admissions if brought into the facility.
6. Stroller and wheelchair rentals are available.
7. Explore-Abilities Access Program resources including sunglasses, fidget toys, ear defenders, and UbiDuo 2-Way Communication Device, as well as access to a designated quiet zone apart from museum galleries are available upon request.
8. Change tables, a nursing room, a family washroom, and an area for snacks are provided.
9. Storage lockers are available onsite for a \$1 non-refundable fee.
10. Hours and rates are subject to change without notice.

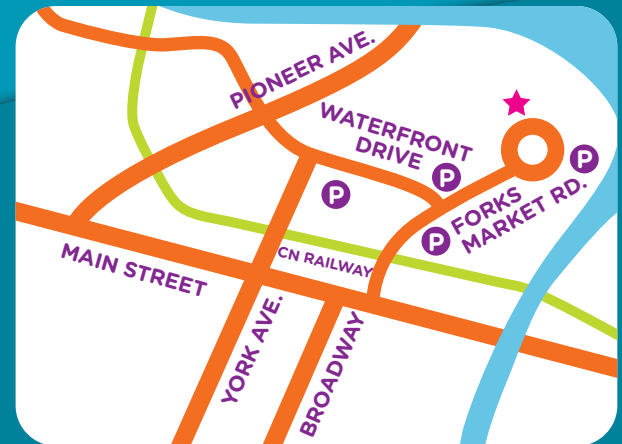
# ABOUT US



**THE CHILDREN'S MUSEUM EXISTS  
TO SPARK KIDS' CREATIVE LEARNING.**

As a non-profit charitable organization, we believe in the potential of all children and provide an interactive learning environment that nurtures the power of imagination and spirit of self-discovery. For over 35 years, we have been the place for families to play, laugh, learn, and grow.

## FIND US AT THE FORKS!



@childmuseumwpg

## children's museum

45 Forks Market Road  
Winnipeg, MB R3C 4T6  
Treaty 1 Territory  
info line 204.924.4000

[childrensmuseum.com](http://childrensmuseum.com)



The Children's Museum is a registered non-profit  
children's charity (#10348 0943 RR0001)

VIB03-23E